

WALTER BETON GmbH

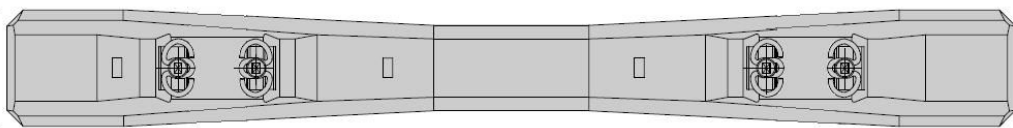
Boenheimstr. 8 86153 Augsburg Germany
Tel +49 821 5582 110 - Fax +49 821 5582 216
www.walter-beton.com - info@walter-beton.com



MOSTLY COMMON TYPE OF
PRE-STRESSED CONCRETE SLEEPERS
TO BE PRODUCED WITH WALTER SYSTEM



SLEEPER TYPE B70



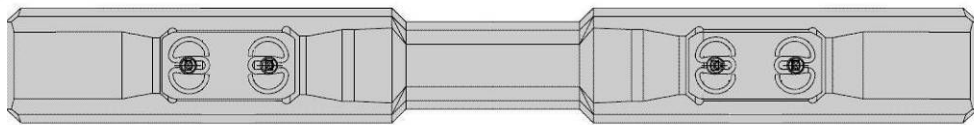
German standard

Length	2600 mm (2400mm)
Weight of sleeper:	~ 300 kg incl. preassembled fastening
Axle load:	250 kN
Max speed	230 km/h (160 km/h – 2400mm length)
Gauge	1453 mm
Inclination at rail seat:	1:40
Fastening system	Vossloh W System – B70 W 60-54 or Pandrol Fastclip System – B70 P

Modified to other countries (new design)

Length	usually from 2400 mm until 2700 mm
Axle load:	250 kN – 30 kN – 32,5 kN
Max speed	between 160 km/h until 250 km/h depending on design
Gauge	1453 mm – 1520 mm – 1600 mm
Inclination at rail seat:	1:40 or 1:20 (most usual)
Fastening system	any available in the country

SLEEPER TYPE B75



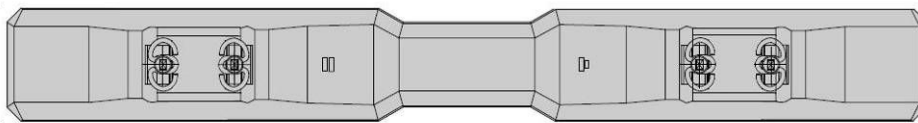
German standard

Length	2800 mm
Weight of sleeper:	~ 480 kg incl. preassembled fastening
Axle load:	250 kN
Max speed	230 km/h
Gauge	1453 mm
Inclination at rail seat:	1:40
Fastening system	Vossloh System – B75 W300

Modified to other countries (new design)

Length	2600 mm until 2900 mm
Axle load:	250 kN – 30 kN – 32,5 kN
Max speed	between 160 km/h until 250 km/h depending on design
Gauge	1453 mm – 1520 mm – 1600 mm
Inclination at rail seat:	1:40 or 1:20 (most usual)
Fastening system	any available in the country

SLEEPER TYPE B90



German standard

Length	2600 mm
Weight of sleeper:	~ 350 kg incl. preassembled fastening
Axle load:	250 kN
Max speed	230 km/h
Gauge	1453 mm
Inclination at rail seat:	1:40
Fastening system	Vossloh System

Modified to other countries (new design)

Length	2500 mm until 2700 mm
Axle load:	250 kN – 30 kN – 32,5 kN – 40 kN
Max speed	between 160 km/h until 250 km/h depending on design
Gauge	1453 mm – 1520 mm – 1600 mm - other
Inclination at rail seat:	1:40 or 1:20 (most usual)
Fastening system	any available in the country